

WHEEL LOADER

HL955A



READY TO CHANGE YOUR WORLD

The HL955A Wheel Loader is part of Hyundai's A-Series: a fresh generation of construction equipment that complies with the European stage V emission levels. But it does much more than that! While fulfilling regulatory demands, Hyundai aimed for a ground-breaking level of customer satisfaction with maximum performance and productivity, better safety, more convenience and improved uptime management.

Featuring impressive power matched with carefully selected technologies that help you to work more efficiently and economically, this rugged loader opens up a world of new possibilities. It's time to experience the Hyundai Effect!



ENTER A WORLD WHERE ANYTHING IS POSSIBLE



Productivity

- Load sensing hydraulic system
- Accurate weighing system
- Eco pedal (option)
- Eco Report
- Smart Power mode
- Hydraulic differential lock
- 5-speed transmission with lock-up clutch (option)
- Intelligent clutch cut-off (ICCO)
- Automatic engine shutdown

Durability/Safety

- Unified control valve
- Enhanced axle capacity
- AAVM camera system (option)
- Radar rear detection (option)
- IMOD (Intelligent Moving Object Detection) (option)
- Premium quality axles
- Axle cooling (option)
- Thermostat-based transmission cooling (option)
- Completely sealed engine room
- High grade hoses
- Foldable side mirror
- Seat belt warning alarm

Comfort

- Spacious soundproofed cabin
- Wide touchscreen monitor
- Ride control system
- Fully adjustable seat and armrest
- Remote door control (option)
- Soft end stop

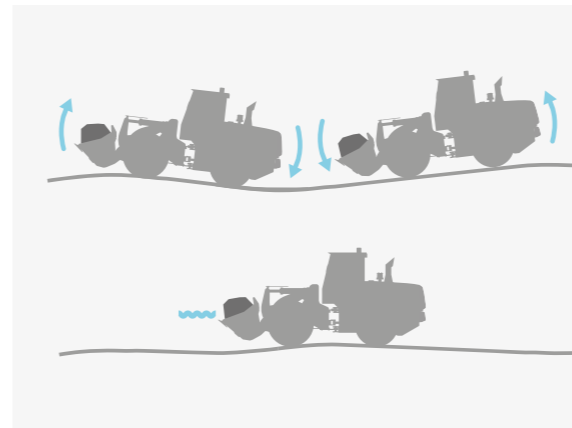
Serviceability

- ECD (Engine Connected Diagnostics)
- Fully openable engine hood
- Hi-MATE telematic system
- Easy filter replacement
- Auto greasing system (option)
- Wide core & fin radiator

PROTECT YOUR CO-WORKERS AND EQUIPMENT

Details can make a huge difference when it comes to safety, especially when you're working in rough conditions. It's not just a matter of complying with rules. The HL955A's safety features are designed and tested to meet your needs in the real world, even offering an extra pair of eyes with the optional Advanced-Around View Monitoring (AAVM), Intelligent Moving Object Detection (IMOD) and radar systems. Confidence is improved by technologies that provide a feeling of stability and smooth performance in high-load work. By helping to ensure a calm, accident-free worksite, this wheel loader adds to every operator's productivity and peace of mind.

A **ride control system** with a piston accumulator reduces pitching of the wheel loader body and bucket for more stable and comfortable operation. It also minimises spillover, adding to convenience and productivity.



The **side mirror** is easy to adjust for optimal visibility and can be folded away to prevent damage during transportation.

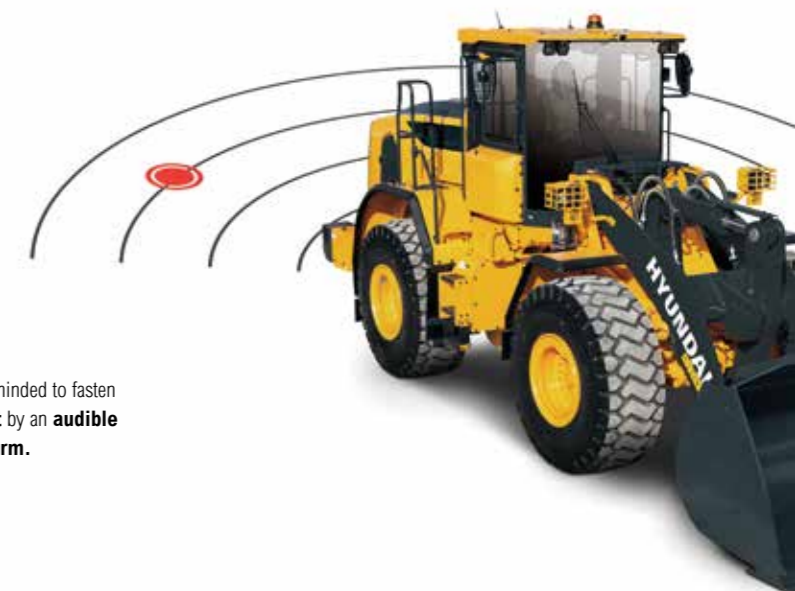
A **hydraulic locking differential** prevents tyre slip for more secure operation as well as better productivity and fuel economy.

"The HL955A looks tough but its strength comes along with very smooth, predictable performance. It gives me extra confidence and makes me feel safer in any conditions."



The optional **Advanced Around View Monitoring (AAVM)** system gives you a 360° overview of your immediate working environment. It also includes Intelligent Moving Object Detection (IMOD) technology that senses and warns you when people or objects come within five metres of the machine.

The optional **radar system** detects obstacles behind the machine day and night, with no blind spots. The distance between the obstacle and the loader is displayed on the secondary monitor.



Operators are reminded to fasten their **safety belt** by an **audible and visible alarm**.

HYUNDAI





The HL955A has a **large, fully adjustable seat and armrest** designed to help operators work longer and more productively. For added comfort, an air suspension seat is available as an option.

The cabin door can optionally be **opened remotely** for added safety and convenience.

The **soft end stop** function reduces the hydraulic speed of the cylinder as it reaches the end of its stroke. This lessens the shock load of the stroke for increased operating comfort and better material retention. The soft end stop function can be switched on and off via the monitor.

A CABIN DESIGNED AROUND YOU

The HL955A cabin was designed as a productive, stress-free working environment that fits every operator perfectly. Pleasant and spacious, it features state-of-the-art noise and vibration reduction technology, achieving a sound level of only 67 dB, one of the lowest in this machine category. The high-quality adjustable seat and armrest ensure comfortable reach to all controls. A range of technologies enable easier machine monitoring and keep you entertained during your working day.

"The seat feels as if it was made for me and details like the new soft end stop feature make work less tiring and more enjoyable."



The **Eco Report** feature makes it easy for operators to develop efficient working habits by displaying real-time information about machine performance.

All the indicators displaying **machine status** are centralised in one cluster to enable easy, efficient control.



TAILORED TECHNOLOGIES TO BOOST YOUR PRODUCTIVITY

The HL955A is powered by a reliable Cummins B6.7 Stage V engine that easily handles heavy-duty work in extreme conditions. Its power is complemented by a range of technologies that enhance fuel efficiency while keeping harmful emissions to a minimum.

Precise operating systems help you to get the most out of this impressive machine, including optimised power matching for the ultimate

balance of torque and RPM. When operated in Smart Power mode, the engine delivers fuel savings of up to 5% along with smooth performance in high-load work. Hyundai's proprietary weighing system technology is integrated as standard. Additional control, monitoring and maintenance features help you to optimise performance and productivity every single day, on any worksite.



"Whether it's high-load digging, harsh weather conditions or a rough worksite... with this machine I'm ready for anything!"



Like all A-Series machines, the HL 955A features our **all-in-one exhaust aftertreatment system** which cuts emissions and operating costs while enhancing reliability and simplifying maintenance.



The highly accurate **automatic/manual cumulative weighing system** helps you to manage production more efficiently in any environment. For maximum precision, weighing error icons and a two-colour weight value indicator are displayed on the monitor.



The new **Smart Power mode** adjusts engine RPM in heavy load work like digging to save fuel without compromising on performance. The technology also achieves an optimal balance between traction and breakout forces.



The **engine shuts down automatically when the machine is at rest** to cut fuel consumption and prevent unnecessary emissions. Different operating modes and idling times can be selected according to the work environment, further enhancing efficiency.

A **five-speed transmission with lockup clutch** is available as an option, allowing you to work more efficiently while keeping fuel consumption and emissions low.



The HL955's **parallel Z-bar linkage** has been specially developed to provide the optimal balance between lifting power and tilt forces, combined with parallel lift.

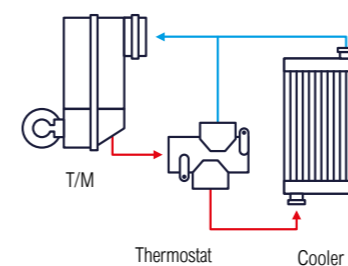


MORE UPTIME FOR A RELIABLE RETURN ON YOUR INVESTMENT

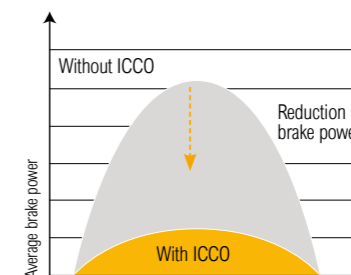


To protect your business, you need to know that the investment you make today will sustain your profits over the long term. That's why we prioritised reliability throughout the development of the HL955A, from design and manufacturing to quality control.

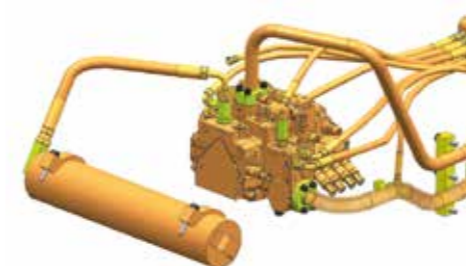
The axles, driveshaft and all operating systems have been revised and tested rigorously for endurance on a range of work sites. The result is a tough, durable workhorse that minimises downtime for repairs and maintenance and helps you to protect your profits.



The optional **thermostat for transmission cooling** helps to warm up the fluid quickly and keeps it at the optimal working temperature, protecting components and increasing efficiency.



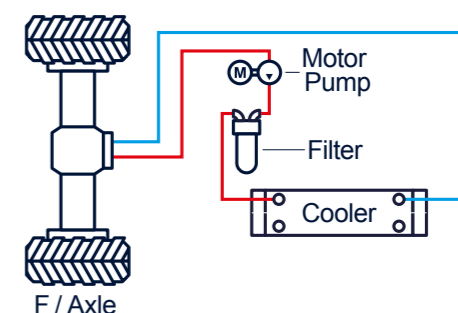
The **Intelligent Clutch Cut-Off (ICCO)** function minimises loss of power in the torque converter and prevents excessive power use during braking. This reduces heat generation and wear on the brake disc.



The hydraulic system has been simplified with a **unified control valve system**. This removes the need for hydraulic hoses connected to each valve, decreasing the number of possible leak points.

High-grade hoses with outstanding resistance to heat and pressure provide maximum durability, even in rough working conditions.

The HL955A features **premium quality axles with enhanced load capacity** for better reliability and durability. A separate **axle oil cooling system** is available as an option to prevent overheating during high-load work or tasks requiring frequent braking.



EASY SERVICING FOR TROUBLE-FREE OWNERSHIP

The peace of mind that comes with quick, low-effort servicing is part of what we call the Hyundai Effect. The HL955A is designed to make maintenance as convenient as possible. The engine hood opens wide to provide easy access for cleaning and routine tasks. All components and materials have been optimised to ensure a long, trouble-free life.

Hyundai's Hi-MATE remote management system is integrated to provide the highest level of service and support. The HL955A also features our new Engine Connected Diagnostics (ECD) system which immediately reports any engine failure to both Hi-MATE and the engine manufacturer to ensure the fastest, easiest resolution.

HiMATE



Hyundai's exclusive Hi-MATE remote management system allows you to monitor your machines from any location via a dedicated website or mobile app, with access to diagnostics and working parameters like total engine hours, actual working hours and fuel consumption. The system makes it easy to evaluate machine productivity and plan servicing and maintenance tasks, as well as any required cost saving measures. It also offers geofencing to protect your machines against theft and unauthorised usage.



Our new **Engine Connected Diagnostics (ECD)** technology supports service technicians by providing remote diagnostics reports so that they can prepare properly for site visits.



With the optional **auto greasing system**, grease is applied to lubrication points automatically when needed. The correct dosing is ensured and lubricant is applied uniformly, reducing grease consumption and eliminating waste.



The **tilt-back engine hood is fully retractable** and can be **opened electrically** for easy access to the sealed engine room and cooling room. The engine room is designed to prevent the possibility of fire caused by the inflow of foreign materials.



The **air conditioning filter** is easy to replace.



The HL955A has a dependable **wide-core and fin air cooler** that prevents performance degradation caused by contamination.

FOCUSED TECHNOLOGIES FOR THE RESULTS YOU WANT

Hyundai's A-Series wheel loaders are designed to create better conditions for operators and deliver the ultimate ownership experience. Every detail is carefully fine-tuned to match your needs in the field, including better safety and comfort, higher productivity, maximum uptime and easy servicing. This is all part of the Hyundai Effect.

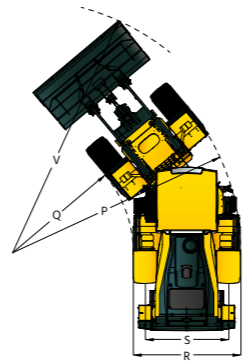
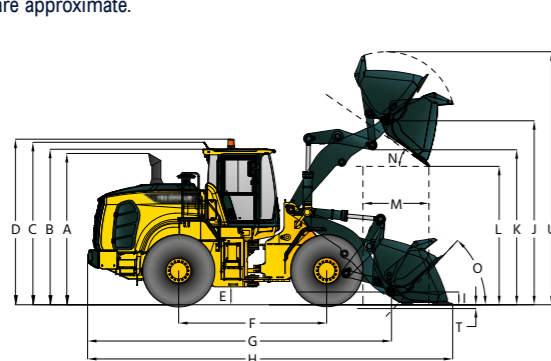
See more at hyundai-ce.eu



DIMENSIONS

DIMENSIONS

All dimensions are approximate.



Description	HL955A		HL955AXT	
	mm	ft in	mm	ft in
A Height to Top of Exhaust Pipe	3,320	10' 11"	3,320	10' 11"
B Height to Top of Cabin	3,390	11' 1"	3,390	11' 1"
C Height to Top of Product Link Antenna	3,440	11' 3"	3,440	11' 3"
D Height to Top of Warning Beacon	3,520	11' 7"	3,520	11' 7"
E Ground Clearance	410	1' 4"	410	1' 4"
F Wheelbase	3,050	10'	3,050	10'
G Overall Length (Without Bucket)	6,430	21' 1"	7,025	23' 1"
H Shipping Length (With Bucket Level on Ground)	7,715	25' 4"	8,310	27' 3"
I Hinge Pin Height at Carry Position	440	1' 5"	610	2'
J Hinge Pin Height at Maximum Lift	3,940	12' 11"	4,515	14' 10"
K Lift Arm Clearance at Maximum Lift	3,340	10' 11"	3,905	12' 10"
L Dump Clearance at Maximum Lift and 45° Discharge	2,785	9' 2"	3,360	11'
M Reach at Maximum Lift and 45° Discharge	1,180	3' 10"	1,220	4'
N Dump Angle at Maximum Lift and Dump (on Stops)	48		48	
O Roll Back Angle	Ground	41	41	
	Carry	46	47	
P Clearance Circle (Diameter) to Outside of Tyres	11,140	36' 7"	11,140	36' 7"
Q Clearance Circle (Diameter) to Inside of Tyres	5,980	19' 4"	5,980	19' 4"
R Width Over Tyres (Unloaded)	2,530	8' 4"	2,530	8' 4"
S Tread Width	2,010	6' 7"	2,010	6' 7"

OPERATING SPECIFICATIONS WITH BUCKETS

Linkage Bucket Type	Edge Type	General Purpose Pin On		General Purpose Hook On	High Lift Linkage Change
		Bolt-On Cutting Edges	2 Piece Tooth & Segment	Bolt-On Cutting Edges	
Capacity - Rated	m³	2.8	2.8	2.8	-
	yd³	3.7	3.7	3.7	
Capacity - Rated at 110% Fill Factor	m³	3.1	3.1	3.1	-
	yd³	4.1	4.1	4.1	
Width	mm	2,740	2,810	2,740	-
	ft/in	9'	9' 3"	9'	
Dump Clearance at Maximum Lift & 45° Discharge	mm	2,785	2,660	2,600	+575
	ft/in	9' 2"	8' 9"	8' 6"	1' 11"
Reach at Maximum Lift & 45° Discharge	mm	1,180	1,275	1,355	+40
	ft/in	3' 10"	4' 2"	4' 5"	+2"
Digging Depth	mm	85	85	85	+35
	ft/in	3"	3"	3"	+1"
Shipping Length (with Bucket)	mm	7,715	7,870	7,970	+595
	ft/in	25' 4"	25' 10"	26' 2"	+1' 11"
Overall Height with Bucket at Maximum Lift	mm	5,330	5,330	5,515	+575
	ft/in	17' 6"	17' 6"	18' 1"	+1' 11"
Loader Clearance Circle with Bucket at Carry Position	mm	12,550	12,720	12,700	+600
	ft/in	41' 2"	41' 9"	41' 8"	+1' 12"
Static Tipping Load. Straight (No Tire Deflection)	kg	11,350	11,300	10,200	-1150
	lb	25,022	24,912	22,487	-2535
Static Tipping Load. Articulated (No Tire Deflection)	kg	9,850	9,800	8,850	-1000
	lb	21,716	21,605	19,511	-2205
Breakout Force	kg	14,370	14,370	11,980	+170
	lb	31,680	31,680	26,411	+375
Operating Weight*	kg	15,800	15,855	16,175	+690
	lb	34,830	34,950	35,660	+1521

* All height and tyre related dimensions are with standard 23.5 R25, L3 tyres.

DENSITY AND BUCKET SELECTION

DENSITY OF OPERATING MATERIALS

Loose Material	Material Density [ton / m³]	
Earth / Clay	1.5 ~ 1.7	
Sand and Gravel	1.5 ~ 1.7	
Aggregate	25 ~ 76 mm (1 to 3 in)	1.6 ~ 1.7
	19 mm (0.75 in) and larger	1.8

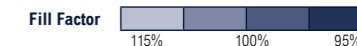
HL955A / HL955AXT BUCKET SELECTION CHART

Standard Lift Arm - General Purpose Bucket

Type	m³ (yd³)	Material Density [ton / m³]															
		0.8 (1349)	0.9 (1517)	1.0 (1686)	1.1 (1854)	1.2 (2023)	1.3 (2191)	1.4 (2360)	1.5 (2528)	1.6 (2697)	1.7 (2865)	1.8 (3034)	1.9 (3203)	2.0 (3371)	2.1 (3540)	2.2 (3708)	2.3 (3877)
Cutting edge	2.8 (3.7)	3.2 m³ (4.2 yd³)								2.7 m³ (3.5 yd³)							
2-Bolt on Tooth & Segment Edge	2.8 (3.7)	3.2 m³ (4.2 yd³)								2.7 m³ (3.5 yd³)							
Cutting Edge Q/C	2.8 (3.7)	3.2 m³ (4.2 yd³)								2.7 m³ (3.5 yd³)							

High lift arm (XT) - General Purpose Bucket

Type	m³ (yd³)	Material Density [ton / m³]															
		0.8 (1349)	0.9 (1517)	1.0 (1686)	1.1 (1854)	1.2 (2023)	1.3 (2191)	1.4 (2360)	1.5 (2528)	1.6 (2697)	1.7 (2865)	1.8 (3034)	1.9 (3203)	2.0 (3371)	2.1 (3540)	2.2 (3708)	2.3 (3877)
Cutting edge	2.8 (3.7)	3.2 m³ (4.2 yd³)								2.7 m³ (3.5 yd³)							
2-Bolt on Tooth & Segment Edge	2.8 (3.7)	3.2 m³ (4.2 yd³)								2.7 m³ (3.5 yd³)							
Cutting Edge Q/C	2.8 (3.7)	3.2 m³ (4.2 yd³)								2.7 m³ (3.5 yd³)							



CHANGE IN OPERATING SPECIFICATIONS - TYRES

Tyres		20.5-25 16PR L5	20.5 R25 ★ XHA	20.5-25 16PR L3
		Operating Weight	kg +440 lb +970	-52 -115
Static Tipping Load. Straight (No Tyre Deflection)	kg +280 (+230)	-35 (-30)	-70 (-60)	
	lb +617 (+507)	-77 (-66)	-154 (-240)	
Static Tipping Load. Articulated (No Tyre Deflection)	kg +240 (+200)	-30 (-25)	-60 (-50)	
	lb +529 (+441)	-66 (-55)	-132 (-110)	
Vertical Height Changes	mm +65	-7	-3	
	ft/in +3"	-0.3"	-0.1"	
R. Width Over Tyres (Unloaded)	mm +27	-6	-6	
	ft/in +1"	-0.2"	-0.2"	
P. Clearance Circle (Diameter) to Outside of Tyres	mm +27	-6	-6	
	ft/in +1"	-0.2"	-0.2"	
Q. Clearance Circle (Diameter) to Inside of Tyres	mm -27	+6	+6	
	ft/in -1"	+0.2"	+0.2"	

** Dimension Changes Compared to 20.5R25, ★, L3 tires.

() : XT SPEC

SPECIFICATIONS

ENGINE	
Maker / Model	CUMMINS B 6.7 / EU Stage V
Type	6 cylinder, Watercooled, 4-cycle, turbocharged charge aircooled, direct injection, electronic controlled diesel engine
Aftertreatment System	DOC, DPF, SCR, VGT
Gross Power (SAE J1995)	200 HP (149 kW) at 2.200 rpm
Net Power (SAE J1349)	197 HP (147 kW) at 2.200 rpm
Max. Power	210 HP (157 kW) at 1.900 rpm
Peak Gross Torque (SAE J1995)	990 N·m (730 lb.ft) at 1.300 rpm
Displacement	6.7 l (408 cu in)
No. of Cylinders	6
Bore × Stroke	107 mm (4.21") × 124 mm (4.88")
Compression Ratio	17.3 : 1
Air Cleaner	Dry, Two stage dual elements
Alternator	24 V - 95 Amp
Battery	2 x 12V, 900 CCA
Starting Motor	24V - 5.5kw
<ul style="list-style-type: none"> The indicated net power is available for the flywheel when the engine is equipped with a fan, alternator, air cleaner, and after-treatment device. The indicated gross power is obtained with the fan at maximum speed. 	

TRANSMISSION			
Torque converter type*		3-Elements, Single-stage, Single phase	
Type		20.5 R25, ★★, L3	
Travel speed		4 speed T/M	5 Speed T/M with lock up clutch
		km/h (mph)	km/h (mph)
Forward	1st	7.1 (4.4)	6.5 (4.0)
	2nd	11.7 (7.3)	11.4 (7.1)
	3rd	23.6 (14.7)	17.6 (10.9)
	4th	39.2 (24.4)	27.3 (17.0)
	5th	-	40.0 (24.9)
Reverse	1st	7.4 (4.6)	6.9 (4.3)
	2nd	12.3 (7.6)	12.0 (7.5)
	3rd	24.9 (15.5)	28.8 (17.9)

* Full automatic power shift, countershaft type with soft-shift in range and direction. Properly matched torque converter to engine and transmission for excellent working ability

AXLES	
Drive system	Four-wheel drive system
Front	Fixed
Rear	Oscillating ±11 degrees
Hub reduction	Planetary reduction at wheel end
Differential	Conventional
Reduction ratio	23.334

TYRES	
Type	Tubeless, loader design tyres
Standard	20.5 R25, ★★, L3
Options include	20.5 R25, ★, XHA
	20.5-25, 16PR, L3
	20.5-25, 16PR, L5

OVERVIEW			
Description	HL955A	HL955AXT	
Operating weight	15800 kg (34830 lb)	16490 kg (36350 lb)	
Bucket capacity	Heaped	2.8 m³ (3.7 yd³)	
	Struck	2.4 m³ (3.1 yd³)	
Breakout force-bucket	14370 kg (31680 lb)	14540 kg (32055 lb)	
Tipping load	Straight	11350 kg (25022 lb)	9400 kg (20723 lb)
	Full turn	9850 kg (21716 lb)	8150 kg (17968 lb)

CABIN	
ROPS / FOPS Cabin Meet ISO 3471 and ISO 3449	

BRAKES	
Service Brakes	Hydraulically actuated, wet disc brakes actuate all 4 wheels, independent axle-by-axle system. Self adjusting & wheel speed brake.
Parking Brake	Spring-applied, hydraulically released brake
Emergency Brake	When brake oil pressure drops, indicator light alerts operator and parking brake automatically applies.

HYDRAULIC SYSTEM		
Type	Load sensing hydraulic system	
Maximum Pump Output	185 l/min (48.8 gal/min) at 2.200 rpm	
Maximum Operating Pressure	280 bar (3,980 psi)	
Control Valve	2 Spool (Bucket, Boom) 3 Spool (Bucket, Boom, Aux)	
Lift Circuit	The valve has four functions; Raise / Hold / Lower / Float Can adjust automatic kickout from horizontal to full lift.	
Tilt Circuit	The valve has three functions; Tilt back / Hold / Dump Can adjust automatic bucket positioner to desired load angle.	
Hydraulic Cycle Time with Rated Payload	Raise from Carry Position: 5.5 Sec.	
	Dump, at maximum raise: 2.0 Sec.	
	Lower, empty, float down: 3.9 Sec	
	Total: 11.4 Sec.	
Cylinder	Type: double acting	No. of cylinders-bore × stroke
	Lift	2-125 × 745 mm (2-4.9" × 29.3")
	HL955A Tilt	1-140 × 560 mm (1-5.5" × 1' 10")
	HL955A XT Tilt	1-140 × 585 mm (1-5.5" × 1' 11")

STEERING SYSTEM		
Type	Load sensing hydrostatic articulated steering	
Pump	Variable displacement piston pump	
System pressure	210 bar (3,046 psi)	
Cylinder	Double acting	2 - 70 mm (2.8") x 418 mm (16.5")
Steering angle	40° to both right and left angle, respectively	
Features	Center-point frame articulation. Tilt and telescopic steering column	

* Hyundai Bio Hydraulic Oil (HBHO) available.

SERVICE REFILL CAPACITIES		
UNIT	l	US gal
Fuel tank	230	60.8
DEF tank	37	8.7
Cooling system	42	11.2
Crankcase	18	4.8
Transmission	33	8.7
Front axle	32	8.5
Rear axle	32	8.5
Hydraulic tank	110	29.1
Hydraulic system (Including tank)	200	52.8

SOUND	
Guaranteed noise level presented below can be differed depending on a range of factors such as operating condition, speed of a cooling fan, types of engine and so forth. Hearing protection shall be necessary if an operator is working in the improperly maintained cabin or exposed to a noisy environment by leaving doors and/or windows open.	
With cooling fan speed at maximum value:	
Operator Sound Pressure Level (ISO 6396:2008)	67 dB(A)
Exterior Sound Power Level (ISO 6395:2008)	103 dB(A)

CABIN & INTERIOR		STD
ALARMS, AUDIBLE AND VISUAL		
Air Filter Clogging		●
Transmission Error		●
Battery Voltage		●
Brake Oil Pressure		●
Engine Oil Pressure		●
Fuel Level		●
Hydraulic Oil Temperature		●
Engine Coolant Temperature		●
Transmission Oil Temperature		●
Service Brake Oil Pressure		●
Engine Coolant Level		●
Water In Fuel		●
Maintenance Cycle		●
Alarm, Back-Up		●
Horn, Electric		●
Engine Stop		●
BATTERIES		
900 CCA, 12 V, 2 PCS		●
GAUGES		
Engine Coolant Temperature		●
Fuel Level		●
Speedometer		●
Transmission Oil Temperature		●
INDICATOR LIGHTS		
Parking Brake		●
High Beam		●
Turn Signal		●
Joystick Steering Pilot Lamp		●
FNR		●
Pilot Cut Off		●
Engine Auto Stop		●
Ride Control		●
Seat Belt		●
Differential Lock		●
LCD DISPLAY		
Clock And Fault Code		●
Operating Hour Counter		●
DEF Level		●
Engine rpm		●
Transmission Gear Range		●
Indicator		●
Job Time and Distance		●
Temperature (Coolant, hydraulic oil, T/M oil)		●
LIGHTING SYSTEM		
LED Dome Light		●
2 Stop and Tail Lights		●
4 Turn Signals		●
Brake Lights (Counterweight)		●
2 LED Rear Combi Lamp		●
2 Head Lights on Front Tower		●
2 LED Head Light		●
2 Working Lights on Front Roof		●
4 Working Lights on Front Roof, 2 Working Lights on Rear Roof		●
4 Working Lights (LED) on Front Roof, 2 Working Lights (LED) on Rear Roof		●
2 Working Lights on Grill		●
2 Working Lights (LED) on Grill		●
SWITCHES		
Hazard		●
DPF		●
Engine Hood Open		●
Parking		●
Battery Master Switch		●
FNR Shifter		●
Differential Lock Foot Switch		●
Emergency Steering		●
Pilot Cut Off		●
Air Compressor		●

CABIN & INTERIOR		STD
IGNITION		
Key		●
Button		●
MEMBRANE SWITCHES IN MONITOR		
Main Light		●
Work Light		●
Auto Grease		●
Quick Coupler		●
Ride Control		●
Weighing System		●
Beacon Light		●
Rear Wiper		●
Mirror Heat		●
Auto Position		●
Fine Modulation		●
Cam		●
CABIN (SOUND SUPPRESSED)		
Cigar Lighter & Ashtray		●
Coat Hook		●
AUTOMATIC CLIMATE CONTROL		
Air Conditioner & Heater		●
Defroster		●
Intermittent Wiper and Washer, Front and Rear		●
SEAT		
2" Retractable Seat Belt & Adjustable Mechanical Suspension (Heated)		●
2" Retractable Seat Belt & Adjustable Air Suspension (Heated)		●
PERSONAL STORAGE SPACE		
Console Box		●
Holder, Can and Cup		●
Rear View Mirrors (1 Inside)		●
Rear View Mirrors (2 Outside, Heated)		●
Steering Column, Tilt and Telescopic		●
Steering Wheel With Knob		●
Roller Type Sunshade (Front Window)		●
Roller Type Sunshade (Rear Window)		●
Tinted Safety Glass		●
One Door Cabin		●
Magazine Pocket		●
PEDALS		
One Accelerator Pedal		●
One Brake Pedal		●
Dual-Brake Pedal		●
Accel Pedal Without ECO Switch		●
Accel Pedal with ECO Switch		●
Radio / USB Player		●
Rubber Floor Mat		●
Wrist Rest		●
24 V to 12 V DC Converter (20 A)		●

ENGINE		STD
Alternator, 95A		●
Antifreeze		●
ENGINE, CUMMINS, B6.7		
Stage V		●
Engine Enclosure, Lockable		●
Fan Guard		●
Engine Fuel Priming Pump		●
Fuel / Water Separator		●
CLEAN EMISSION MODULE		
DOC, SCR and DPF		●
Rain Cap, Engine Air Intake		●
Radiator		●
Fuel Warmer		●
Coolant Level Sight Gauge		●
Engine Oil Level Dipstick Gauge		●
Centrifugal Air Precleaner		●

TELEMATICS		STD
Hi-MATE		●
ECD (Engine Connected Diagnostics)		●

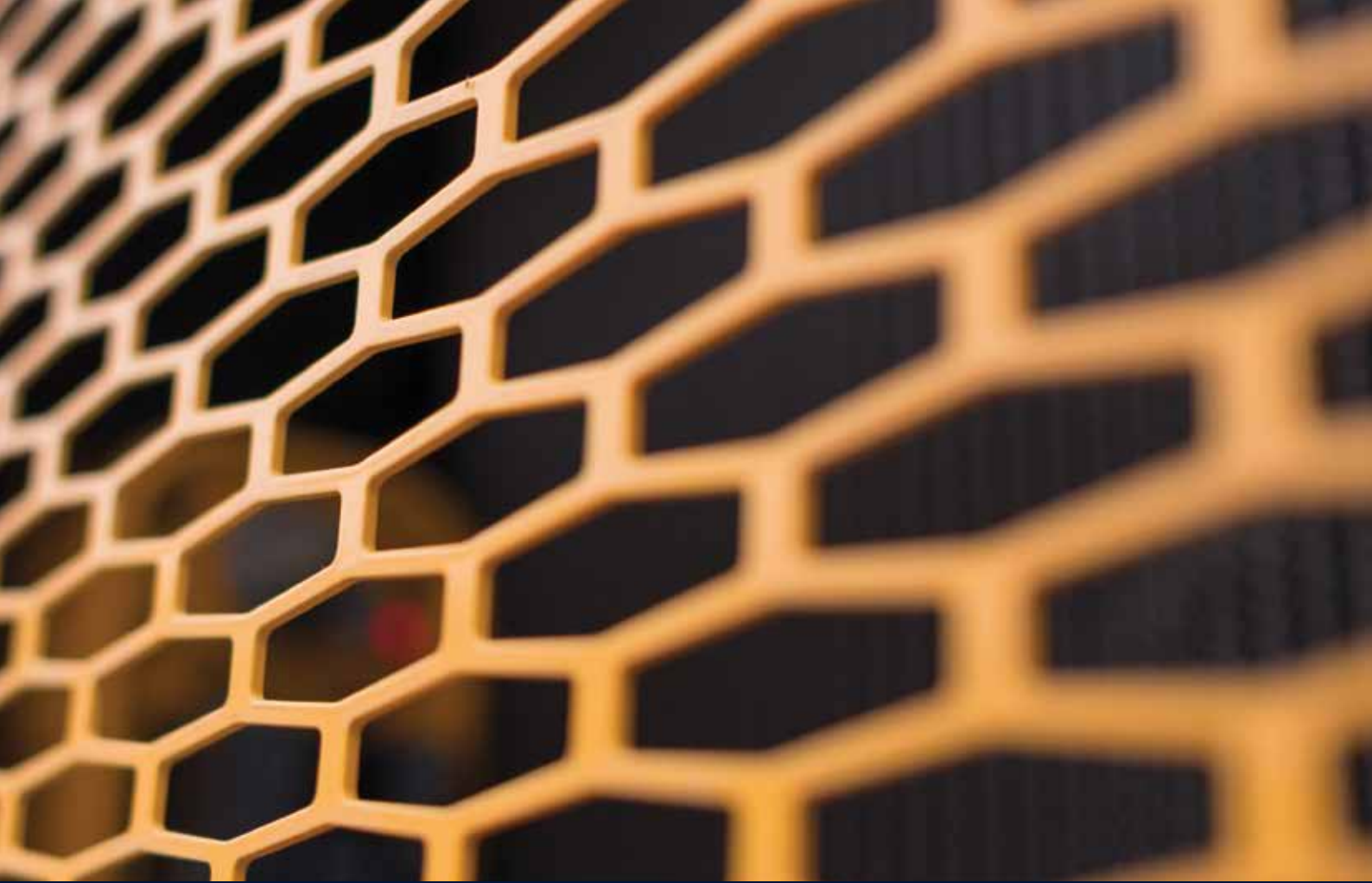
POWER TRAIN		STD
Service Brake (Enclosed Wet-Disk)		●
Parking Brake		●
Torque Converter		●
Transmission F4 / R3, computer controlled, electronic soft shift, auto-shift and kick-down features included		●
Transmission F5 / R3 with Lock-Up Clutch		●
Transmission Oil Sight Level		●
Transmission Oil Cooler		●
Transmission Oil Cooler with Thermostat		●
Axle Cooling System		●
FRONT AXLE		
Hydraulic Lock Differential		●
Limited Slip Differential		●
Open Differential		●
REAR AXLE		
Limited Slip Differential		●
Open Differential		●
TYRES		
20.5 R25, ★★, L3		●
20.5 R25, XHA2		●
20.5-25, 16PR, L3		●
Travel Speed Limiter (20-40 km/h)		●

HYDRAULIC SYSTEM		STD
Boom Kickout, Automatic		●
Bucket Positioner, Automatic		●
Diagnostic Pressure Taps		●
Hydraulic Oil Cooler		●
EH CONTROL (JOYSTICK)		●
EH Control (Fingertip)		●
EH Joystick Steering		●
Ride Control System		●
Secondary Steering System		●
Extra Piping-For Auxiliary Function		●
Quick Coupler Piping		●
Auto Grease System		●
MCV 2 circuits		●
MCV 3 circuits		●
Hyundai Bio Hydraulic Oil (HBHO)		●

SAFETY		STD
Beacon Light, Rotating (LED)		●
Emergency Steering		●
Rear View Camera		●
AAVM (AVM + IMOD)		●
Secondary Monitor		●
Radar		●
ROPS / FOPS Cabin		●
Boom Safety Bar		●

OTHER		STD
Articulation Locking Bar		●
Counterweight		●
Optional Counterweight		●
Remote cabin door		●
Door and Cabin Locks, One Key		●
Doors, Service Access (Locking)		●
Doors, Service Access (Remote Control)		●
Drawbar With Pin		●
ERGONOMICALLY LOCATED AND SLIP RESISTANT, LEFT & RIGHT		
Handrails		●
Ladders		●
Platforms		●
Steps		●
Fenders (Front / Rear)		●
Hydraulic Oil Level Sight Gauge		●
Lift and Tie-Down Hooks		●
Loader Linkage, Sealed		●
PZ-Bar Design		●
Long Boom		●
Vandalism Protection Caplocks		●
Tool Kit		●
2.8m³ Bucket Tooth, 2 Pieces, Bolt-on Type		●
2.8m³ Bucket Cutting Edge, Bolt-on Type		●
2.8m³ Bucket Cutting Edge, ISO QC		●
ISO type Quick Coupler		●
GUARDS		
Crankcase		●
Transmission		●
Cabin Glass (Front / Rear)		●
Mud Guard		●

- Standard and optional equipment may vary. Contact your Hyundai dealer for more information. The machine may vary according to International standards.
- The photos may include attachments and optional equipment that are not available in your area.
- Materials and specifications are subject to change without advance notice.
- All imperial measurements rounded off to the nearest pound or inch.



Specifications and design are subject to change without notice. Pictures of Hyundai Construction Equipment Europe products may show other than standard equipment.

Hyundai Construction Equipment Europe nv.
Hyundailaan 4, 3980 Tessenderlo, Belgium.
Tel: (32) 14-56-2200 Fax: (32) 14-59-3405

EN-2020.03 Rev 0

Ready to experience the Hyundai Effect?

Contact your Hyundai dealer.

hyundai-ce.eu/en/dealer-locator

